



Lahti

Lahti 2035

– Enduring change

The strategy of Lahti

Lahti



Lahti 2035 – Enduring change

In a new-era university and environmental city, businesses thrive and life is meaningful.



Values

Openly | Responsibly | Together

Vibrant growth

- As Finland’s leading environmental city, Lahti’s top-level expertise and the growth of its higher education institutions make it an international trailblazer.
- Our distinguished universities deliver impactful research and innovative solutions. We strengthen knowledge and skills across all levels of education and attract students to build their future in Lahti.
- Lahti is a compelling investment destination and an ideal growth platform for success stories of businesses of all sizes.
- We resolve the challenges in employment by developing new ways of operating.
- We support families and provide the foundation for lifelong learning and growth from childhood to old age.

Meaningful life

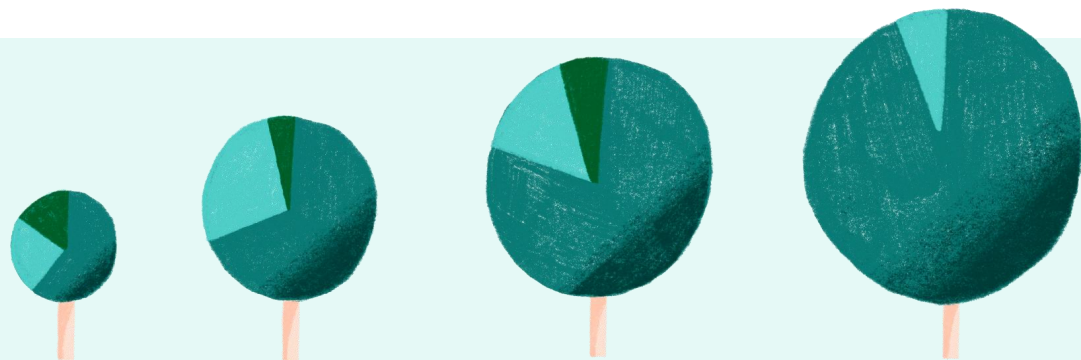
- We safeguard and strengthen our diverse, pristine nature that is the foundation of well-being.
- We promote an active, healthy lifestyle and enable a wide range of recreational opportunities for people of all ages.
- We leave no one behind – every resident of Lahti is valuable.
- We dismantle structures of social segregation. We bolster overall security and a sense of community at all stages of life in collaboration with our partners.
- We are an attractive city of sports and culture with thriving events and growing tourism.

Courage to change

- We build our future on a foundation of a balanced economy and sustainable growth.
- We build a city that is inspiring, sustainable, and accessible. Both the city centre and the neighbourhoods are lively and feel like home.
- We manage through knowledge and improve the impact of our services. We apply new technologies and artificial intelligence ethically and responsibly to develop services and processes.
- We lead the way in inclusion and interactivity. We give Lahti inhabitants the power and responsibility to develop the environments in which they live.
- Lahti is an attractive employer that trusts its personnel. In our city, everyone is allowed to experiment and develop.

Key figures of the strategy

- Lahti is among the six fastest-growing cities in Finland
- Unemployment decreases faster compared to other major cities
- Annual private investments amount to 200 million euros.
- Overnight stays by tourists are increasing.
- Lahti becomes more business-friendly
- Lahti residents exercise enough to maintain a good health
- Lahti residents feel their lives are meaningful
- Substance use among young people is decreasing
- Every schoolchild has a friend
- Loneliness is declining
- Educational attainment among Lahti residents is rising
- Learning outcomes are improving
- Lahti’s economy is balanced
- The city’s employees thrive



- 20 000 students by 2035
- Nature positive by 2030
- First major Finnish city to reach carbon neutrality

Strategy Journey 2025

Scenario work & operating environment analysis

Examining the current and changing world. SHOULD



Focus on the future

Working together with the Lahti community, keeping a firm focus on the future. WILL + ABILITY



Writing & commenting

Distilling the strategy and requesting feedback.



Fine-tuning

Presenting the draft to the City Council and making refinements.



The process is supported by a strategy committee appointed by the City Council and the city's strategy group.



The strategy of Lahti



Lahti 2035 – Enduring change

In a new-era university and environmental city,
businesses thrive and life is meaningful.

Values: Openly | Responsibly | Together



Vibrant growth

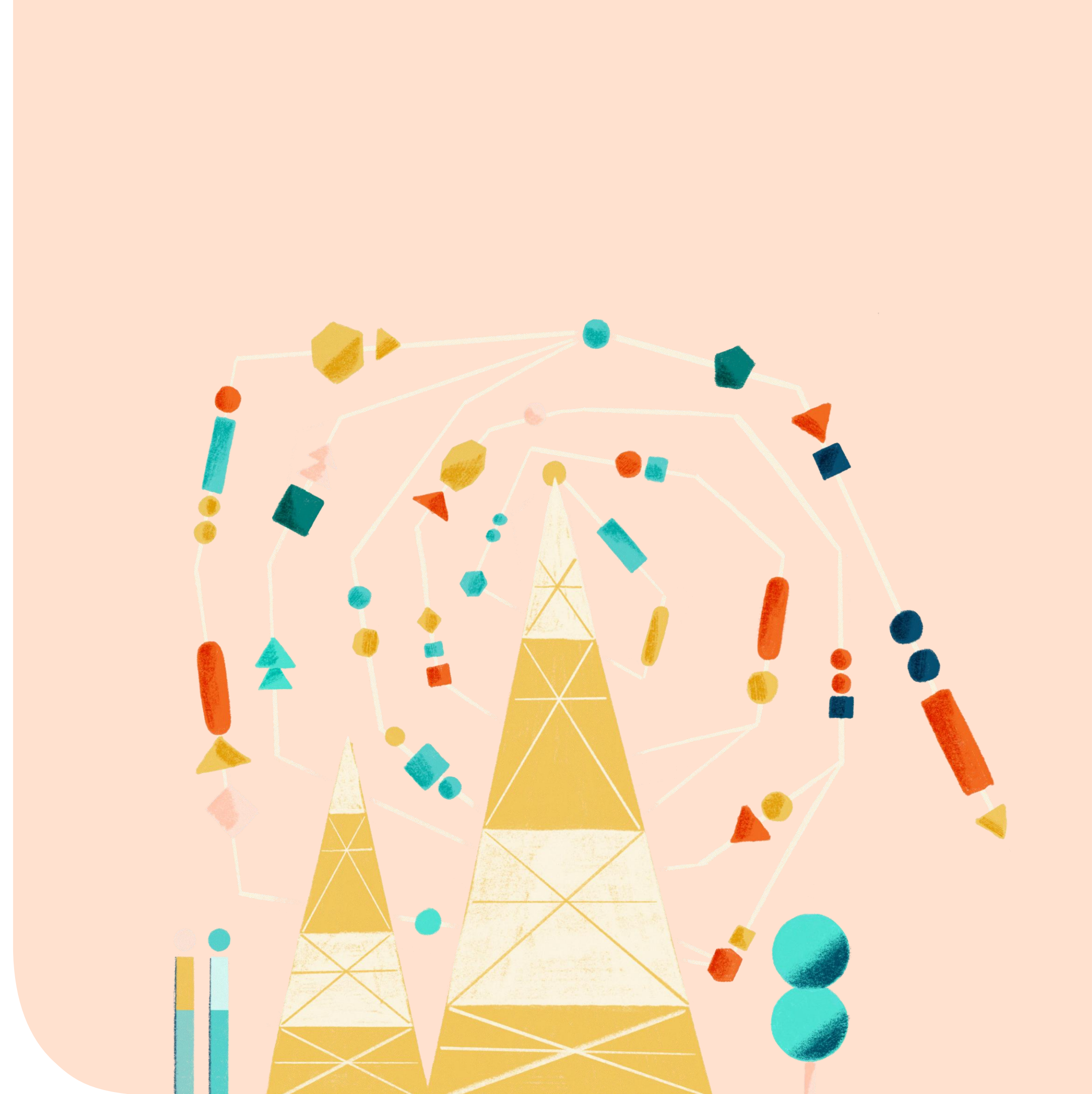
As Finland's leading environmental city, Lahti's top-level expertise and the growth of its higher education institutions make it an international trailblazer.

Our distinguished universities deliver impactful research and innovative solutions. We strengthen knowledge and skills across all levels of education and attract students to build their future in Lahti.

Lahti is a compelling investment destination and an ideal growth platform for success stories of businesses of all sizes.

We resolve the challenges in employment by developing new ways of operating.

We support families and provide the foundation for lifelong learning and growth from childhood to old age.



Meaningful life

We safeguard and strengthen our diverse, pristine nature that is the foundation of well-being.

We promote an active, healthy lifestyle and enable a wide range of recreational opportunities for people of all ages.

We leave no one behind – every resident of Lahti is valuable.

We dismantle structures of social segregation. We bolster overall security and a sense of community at all stages of life in collaboration with our partners.

We are an attractive city of sports and culture with thriving events and growing tourism.



Courage to change

We build our future on a foundation of a balanced economy and sustainable growth.

We build a city that is inspiring, sustainable, and accessible. Both the city centre and the neighbourhoods are lively and feel like home.

We manage through knowledge and improve the impact of our services. We apply new technologies and artificial intelligence ethically and responsibly to develop services and processes.

We lead the way in inclusion and interactivity. We give Lahti inhabitants the power and responsibility to develop the environments in which they live.

Lahti is an attractive employer that trusts its personnel. In our city, everyone is allowed to experiment and develop.

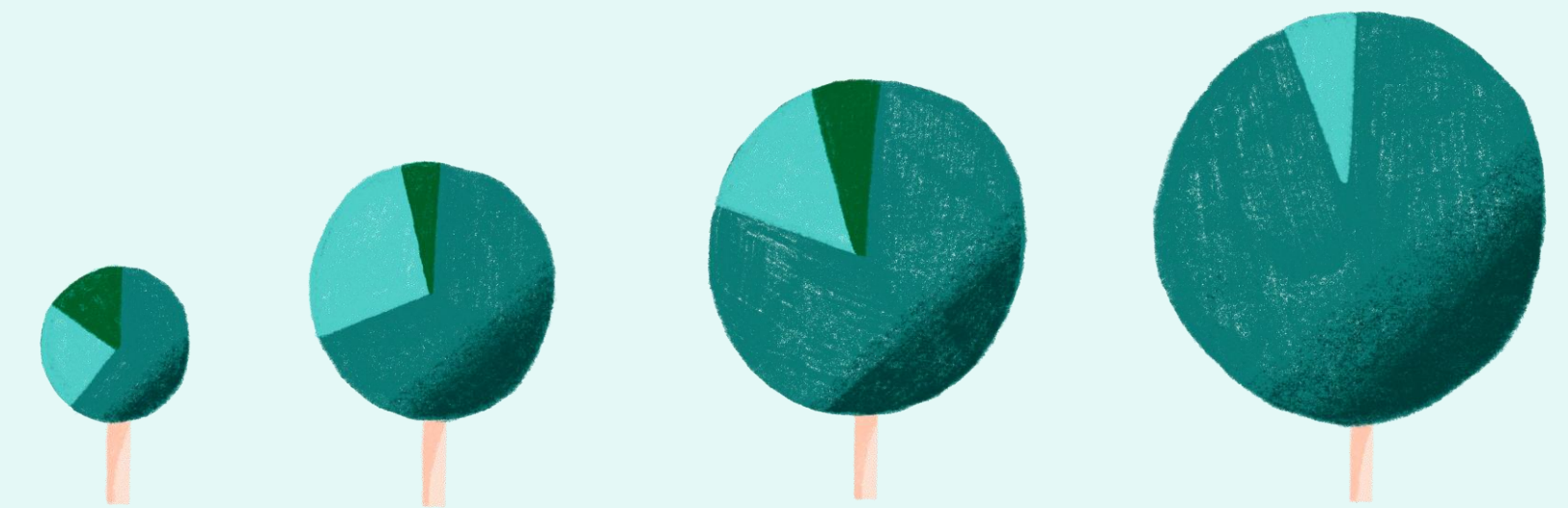


Key figures of the strategy

20 000 students by 2035

Nature positive by 2030

First major Finnish city to reach carbon neutrality



- Lahti is among the six fastest-growing cities in Finland
- Unemployment decreases faster compared to other major cities
- Annual private investments amount to 200 million euros.
- Overnight stays by tourists are increasing.
- Lahti becomes more business-friendly
- Lahti residents exercise enough to maintain a good health
- Lahti residents feel their lives are meaningful
- Substance use among young people is decreasing
- Every schoolchild has a friend
- Loneliness is declining
- Educational attainment among Lahti residents is rising
- Learning outcomes are improving
- Lahti's economy is balanced
- The city's employees thrive